

Cancer Biology Kit  
ELISA Data  
121520

# Patient Samples A, B, C

## ELISA and Plate Layout

Standard Curve  
(Positive Controls)  
1:2 dilutions

250 U/mL

125 U/mL

62.5 U/mL

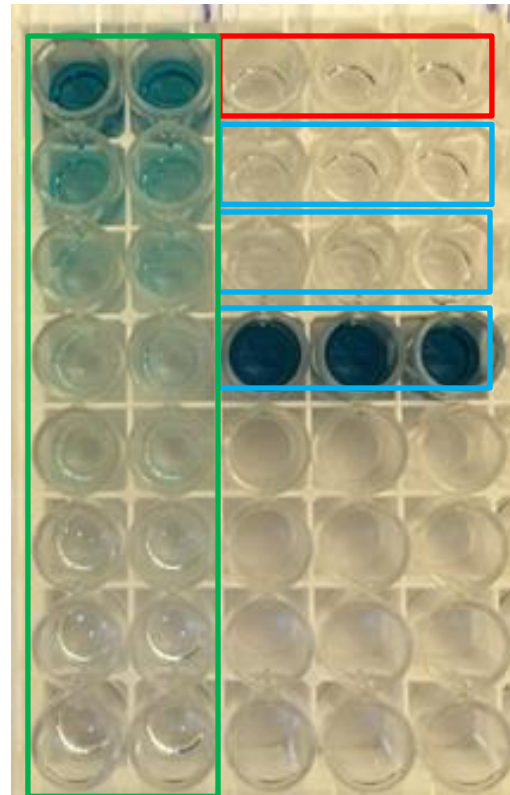
31.2 U/mL

15.6 U/mL

7.8 U/mL

3.9 U/mL

1.9 U/mL



Negative control

Sample A

Sample B

Sample C

# Patient Samples A1, B1, C1 and A2, B2, C2

## ELISA Plate Reader Data (650 nm)

Standard Curve  
(Positive Controls)  
1:2 dilutions

OD reading

250 U/mL

Un0001	Un0009	Blank1	Blank1	Blank1
2.9112	2.4514	0.0443	0.0444	0.0421
Un0002	Un0010	Un0017	Un0020	Un0023
1.0212	0.7098	0.0427	0.0414	0.0412
Un0003	Un0011	Un0018	Un0021	Un0024
0.3980	0.4415	0.0427	0.0428	0.0412
Un0004	Un0012	Un0019	Un0022	Un0025
0.2484	0.2777	3.6840	3.6031	3.5639
Un0005	Un0013			
0.1670	0.1780			
Un0006	Un0014			
0.1057	0.1267			
Un0007	Un0015			
0.0807	0.0806			
Un0008	Un0016			
0.0606	0.0523			

Negative  
control

Sample A1

Sample B1

Sample C1

Un0001	Un0009	Blank1	Blank1	Blank1
2.0357	1.4529	0.0413	0.0412	0.0400
Un0002	Un0010	Un0017	Un0020	Un0023
0.6059	0.3937	0.0419	0.0393	0.0403
Un0003	Un0011	Un0018	Un0021	Un0024
0.2154	0.2415	0.0412	0.0416	0.0404
Un0004	Un0012	Un0019	Un0022	Un0025
0.1386	0.1450	3.2326	3.0878	3.0179
Un0005	Un0013			
0.1061	0.0984			
Un0006	Un0014			
0.0717	0.0886			
Un0007	Un0015			
0.0607	0.0603			
Un0008	Un0016			
0.0492	0.0457			

A2

B2

C2

# Patient Samples D, E, F ELISA and Plate Layout

Standard Curve  
(Positive Controls)  
1:2 dilutions

250 U/mL

125 U/mL

62.5 U/mL

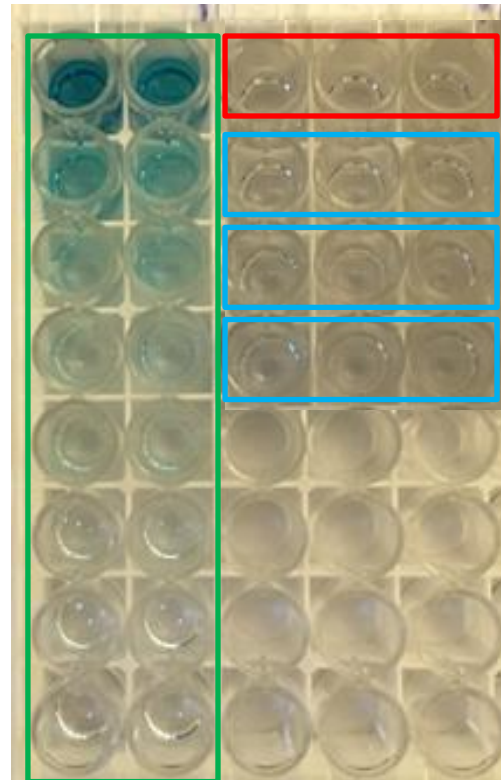
31.2 U/mL

15.6 U/mL

7.8 U/mL

3.9 U/mL

1.9 U/mL



Negative control

Sample D

Sample E

Sample F

# Patient Samples D1, E1, F1 and D2, E2, F2

## ELISA Plate Reader Data (650 nm)

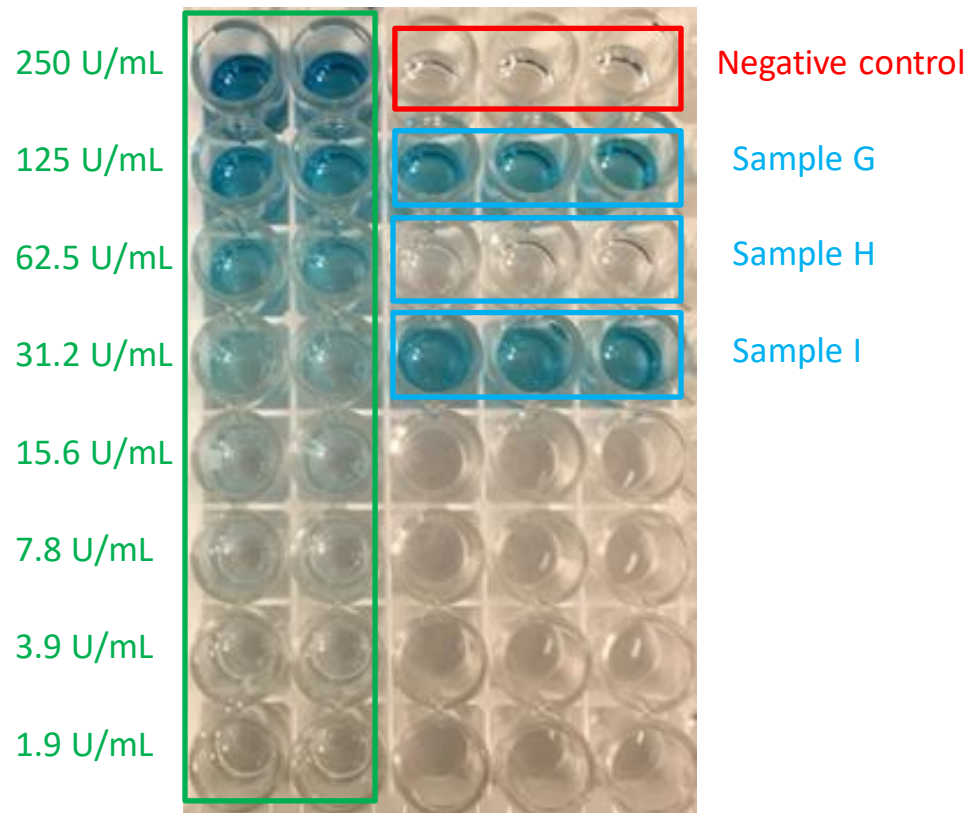
Standard Curve  
(Positive Controls)  
1:2 dilutions

OD reading

250 U/mL	Un0001 1.2088	Un0009 1.2144	Un0026 0.0430	Un0030 0.0420	Un0034 0.0436	Negative control	Un0001 2.0357	Un0009 1.4529	Un0026 0.0401	Un0030 0.0405	Un0034 0.0412	
125 U/mL	Un0002 0.7634	Un0010 0.6513	Un0027 0.0410	Un0031 0.0418	Un0035 0.0429	Sample D1	Un0002 0.6059	Un0010 0.3937	Un0027 0.0404	Un0031 0.0395	Un0035 0.0415	D2
62.5 U/mL	Un0003 0.4470	Un0011 0.4359	Un0028 0.0429	Un0032 0.0418	Un0036 0.0427	Sample E1	Un0003 0.2154	Un0011 0.2415	Un0028 0.0403	Un0032 0.0406	Un0036 0.0407	E2
31.2 U/mL	Un0004 0.2450	Un0012 0.2192	Un0029 0.0428	Un0033 0.0447	Un0037 0.0448	Sample F1	Un0004 0.1386	Un0012 0.1450	Un0029 0.0417	Un0033 0.0424	Un0037 0.0436	F2
15.6 U/mL	Un0005 0.1449	Un0013 0.1495					Un0005 0.1061	Un0013 0.0984				
7.8 U/mL	Un0006 0.0985	Un0014 0.0938					Un0006 0.0717	Un0014 0.0886				
3.9 U/mL	Un0007 0.0694	Un0015 0.0708					Un0007 0.0607	Un0015 0.0603				
1.9 U/mL	Un0008 0.0559	Un0016 0.0550					Un0008 0.0492	Un0016 0.0457				

# Patient Samples G, H, I ELISA and Plate Layout

Standard Curve  
(Positive Controls)  
1:2 dilutions





# Patient Samples G1, H1, I1 and G2, H2, I2

## ELISA Plate Reader Data (650 nm)

Standard Curve  
(Positive Controls)  
1:2 dilutions

	Un0001	Un0009	Blank1	Blank1	Blank1
250 U/mL	0.8895	0.7989	0.0377	0.0385	0.0381
125 U/mL	Un0002	Un0010	Un0017	Un0020	Un0023
	0.5286	0.4698	0.4665	0.4286	0.4488
62.5 U/mL	Un0003	Un0011	Un0018	Un0021	Un0024
	0.3171	0.3006	0.0376	0.0373	0.0379
31.2 U/mL	Un0004	Un0012	Un0019	Un0022	Un0025
	0.1795	0.1552	0.4802	0.4502	0.5010
15.6 U/mL	Un0005	Un0013			
	0.1136	0.1085			
7.8 U/mL	Un0006	Un0014			
	0.0810	0.0732			
3.9 U/mL	Un0007	Un0015			
	0.0614	0.0609			
1.9 U/mL	Un0008	Un0016			
	0.0492	0.0488			

OD reading

Negative  
control

Sample G1

Sample H1

Sample I1

	Un0001	Un0009	Blank1	Blank1	Blank1
	1.2088	1.2144	0.0376	0.0387	0.0385
	Un0002	Un0010	Un0017	Un0020	Un0023
	0.7634	0.6513	0.6663	0.6269	0.6576
	Un0003	Un0011	Un0018	Un0021	Un0024
	0.4470	0.4359	0.0384	0.0390	0.0383
	Un0004	Un0012	Un0019	Un0022	Un0025
	0.2450	0.2192	0.7136	0.7066	0.7683
	Un0005	Un0013			
	0.1449	0.1495			
	Un0006	Un0014			
	0.0985	0.0938			
	Un0007	Un0015			
	0.0694	0.0708			
	Un0008	Un0016			
	0.0559	0.0550			

G2

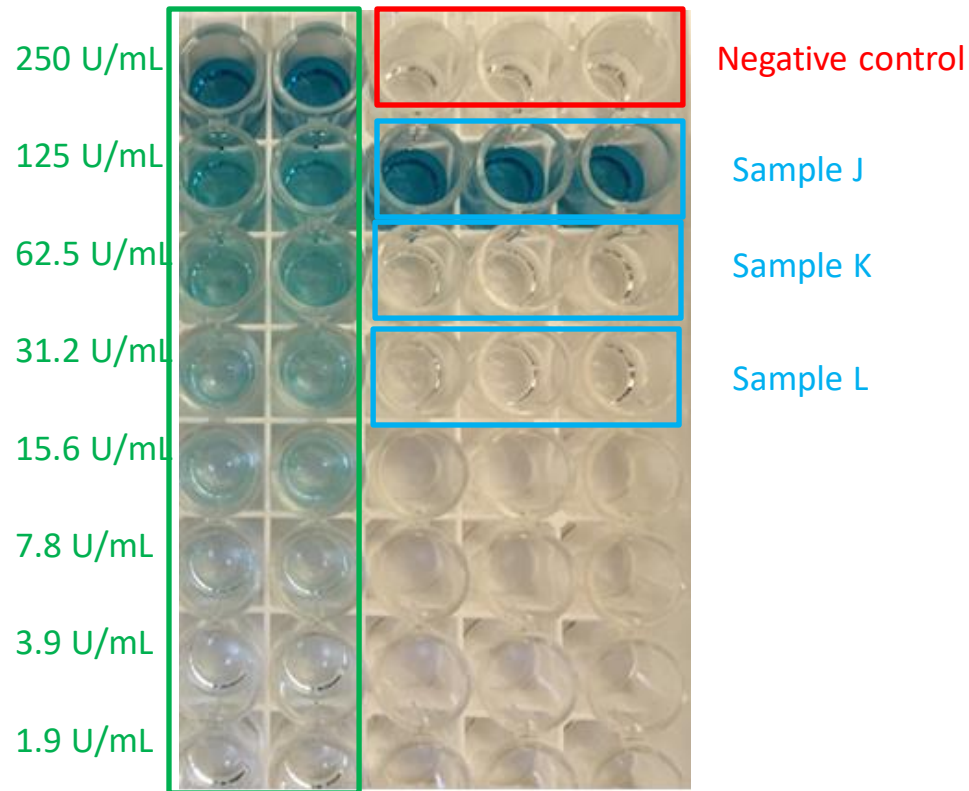
H2

I2

# Patient Samples J, K, L

## ELISA and Plate Layout

Standard Curve  
(Positive Controls)  
1:2 dilutions





# Patient Samples J1, K1, L1 and J2, K2, L2

## ELISA Plate Reader Data (650 nm)

Standard Curve  
(Positive Controls)  
1:2 dilutions

OD reading

250 U/mL	Un0038 1.1487	Un0046 1.1917	Un0026 0.0429	Un0030 0.0416	Un0034 0.0398	Negative control
125 U/mL	Un0039 0.6375	Un0047 0.5977	Un0027 0.6089	Un0031 0.6282	Un0035 0.7006	Sample J1
62.5 U/mL	Un0040 0.3760	Un0048 0.3777	Un0028 0.0386	Un0032 0.0385	Un0036 0.0388	Sample K1
31.2 U/mL	Un0041 0.2192	Un0049 0.2110	Un0029 0.0397	Un0033 0.0389	Un0037 0.0392	Sample L1
15.6 U/mL	Un0042 0.1408	Un0050 0.1403				
7.8 U/mL	Un0043 0.0941	Un0051 0.0955				
3.9 U/mL	Un0044 0.0690	Un0052 0.0654				
1.9 U/mL	Un0045 0.0535	Un0053 0.0553				

	Un0038 0.6429	Un0046 0.6866	Un0026 0.0404	Un0030 0.0403	Un0034 0.0386	
J2	Un0039 0.4073	Un0047 0.3609	Un0027 0.3658	Un0031 0.3859	Un0035 0.4237	
K2	Un0040 0.2364	Un0048 0.2281	Un0028 0.0380	Un0032 0.0389	Un0036 0.0380	
L2	Un0041 0.1525	Un0049 0.1363	Un0029 0.0396	Un0033 0.0382	Un0037 0.0378	
	Un0042 0.1016	Un0050 0.1000				
	Un0043 0.0728	Un0051 0.0731				
	Un0044 0.0576	Un0052 0.0543				
	Un0045 0.0485	Un0053 0.0488				